

FENCEPOST FOUNDATIONS
FEET: 1" = 15'

FIRST FLOOR PLAN
FEET: 1/4" = 1'0" METERS: 1:48

DRAWN BY: JACK SCHAFER

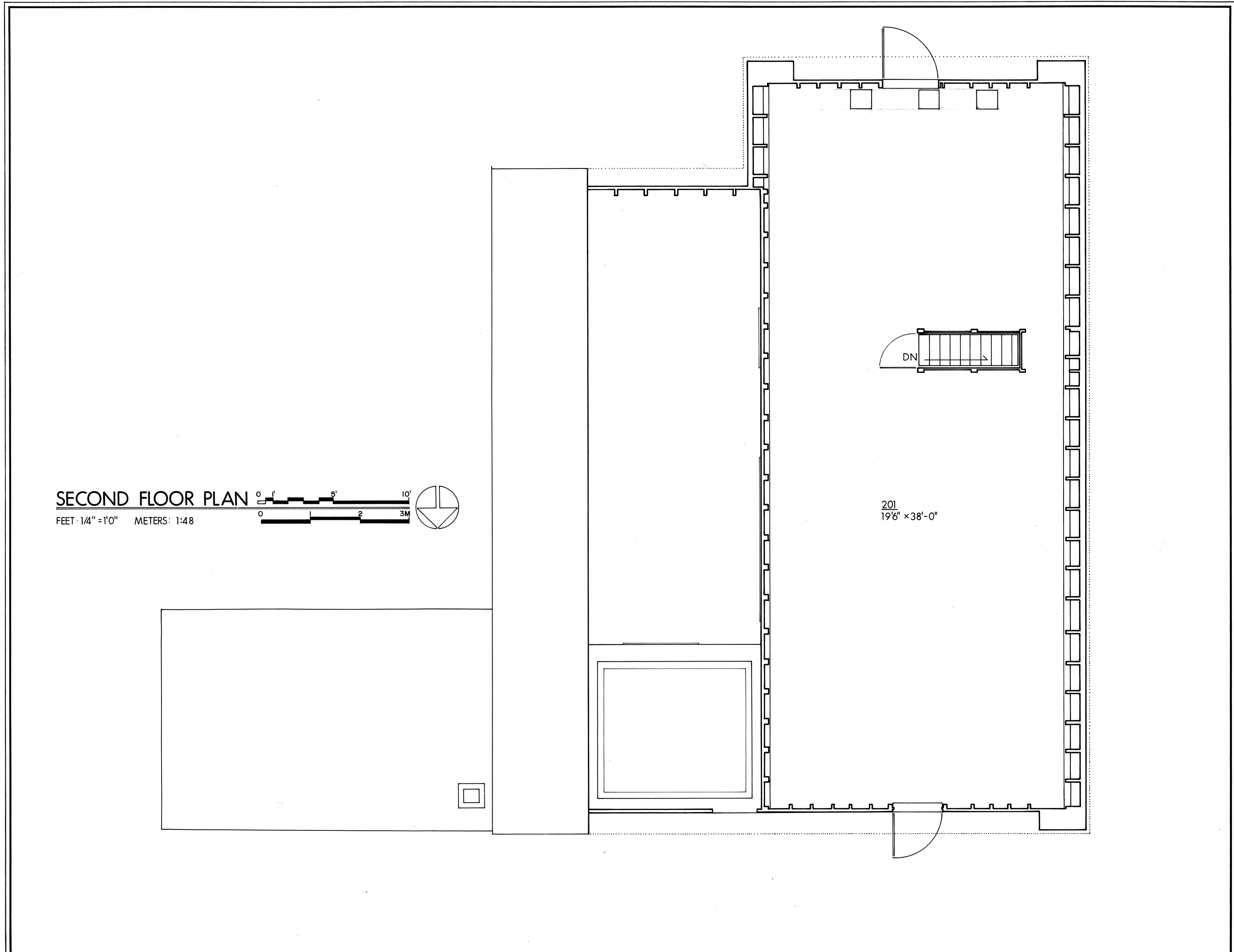
ACADIA NATIONAL PARK PROJECT 1976
OFFICE OF ARCHEOLOGY AND HISTORIC PRESERVATION
UNDER DIRECTION OF THE NATIONAL PARK SERVICE,
UNITED STATES DEPARTMENT OF THE INTERIOR

NAME AND LOCATION OF STRUCTURE
SAINT-GAUDENS NATIONAL HISTORIC SITE - STABLES
SAINT GAUDENS ROAD, OFF NH RT. 12A SULLIVAN COUNTY NEW HAMPSHIRE

SURVEY NO.
NH-196-G

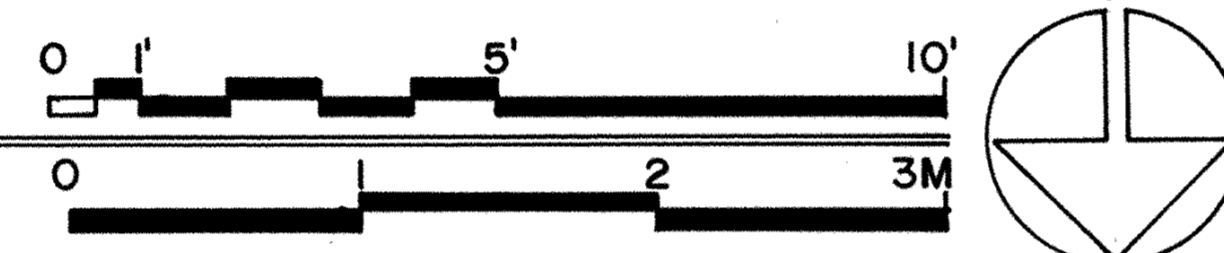
HISTORIC AMERICAN
BUILDINGS SURVEY
SHEET 1 OF 4 SHEETS

LIBRARY OF CONGRESS
INDEX NUMBER



SECOND FLOOR PLAN

FEET: 1/4" = 1'0" METERS: 1:48



201
196' x 38'-0"

DRAWN BY: JACK SCHAFER

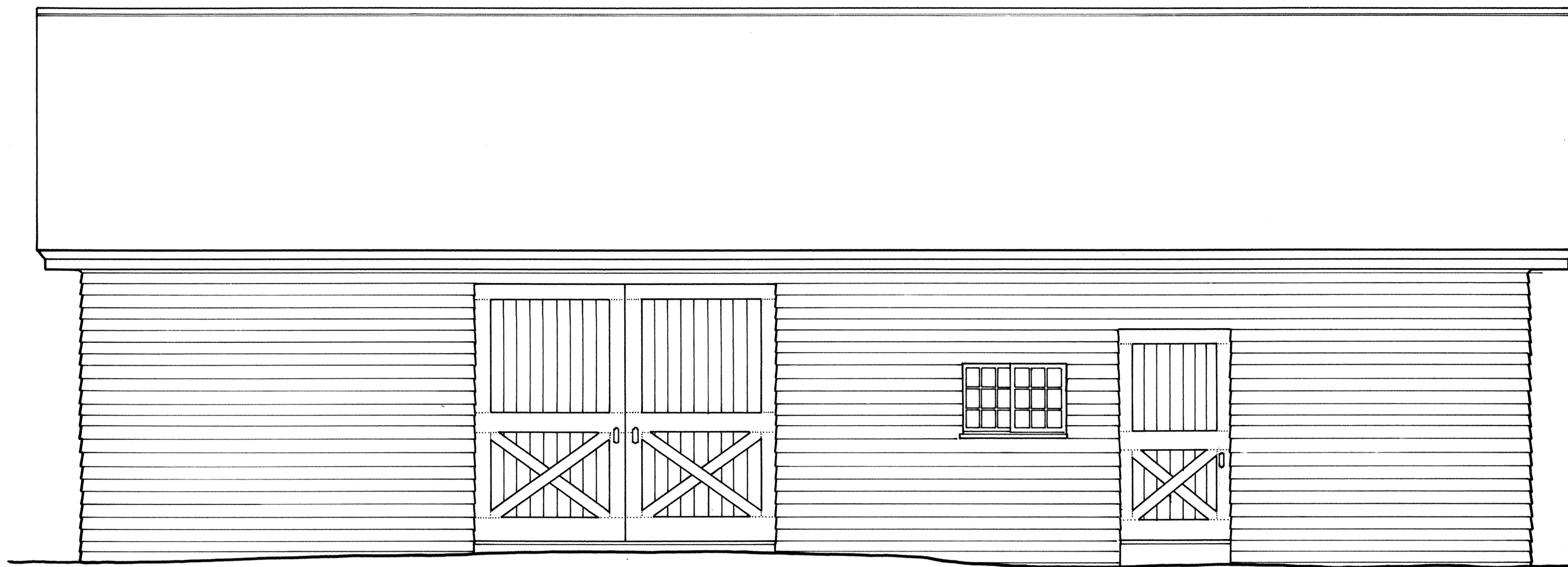
ACADIA NATIONAL PARK PROJECT 1976
 OFFICE OF ARCHEOLOGY AND HISTORIC PRESERVATION
 UNDER DIRECTION OF THE NATIONAL PARK SERVICE,
 UNITED STATES DEPARTMENT OF THE INTERIOR

NAME AND LOCATION OF STRUCTURE
SAINT-GAUDENS NATIONAL HISTORIC SITE - STABLES
 SAINT GAUDENS ROAD, OFF NH RT. 12A SULLIVAN COUNTY NEW HAMPSHIRE

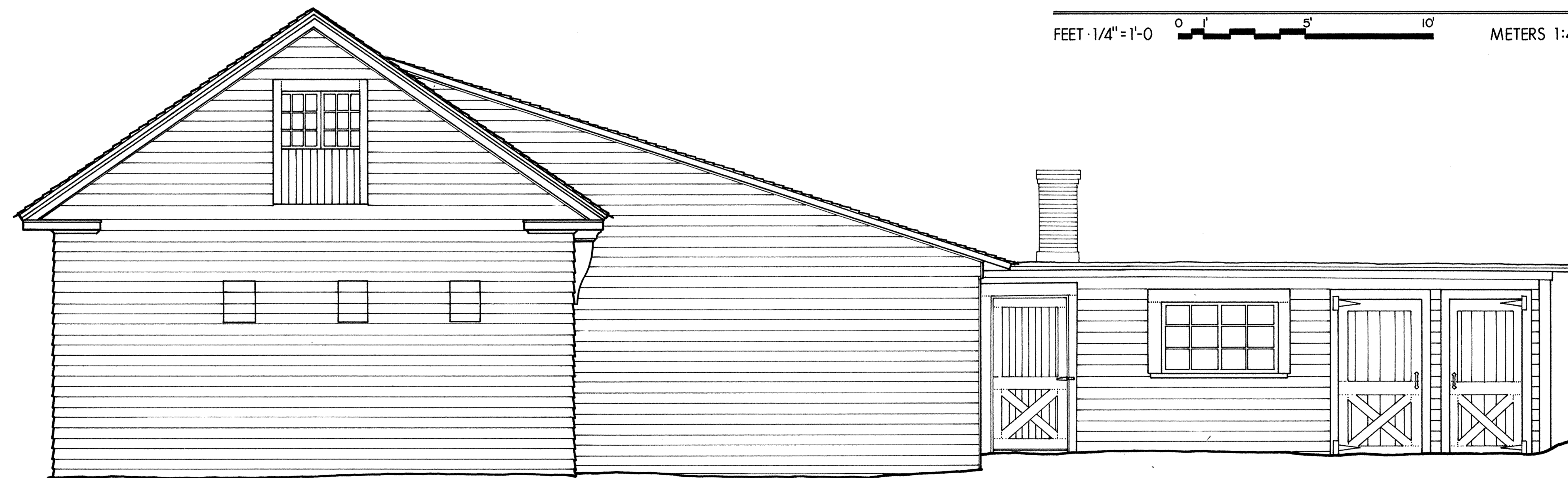
SURVEY NO.
 NH-196-G

HISTORIC AMERICAN
 BUILDINGS SURVEY
 SHEET 2 OF 4 SHEETS

LIBRARY OF CONGRESS
 INDEX NUMBER



WEST ELEVATION



SOUTH ELEVATION

FEET 1/4" = 1'-0" 0' 1' 5' 10'

METERS 1:48 0 1 2 3M

DRAWN BY: JACK SCHAFER

ACADIA NATIONAL PARK PROJECT 1976
 OFFICE OF ARCHEOLOGY AND HISTORIC PRESERVATION
 UNDER DIRECTION OF THE NATIONAL PARK SERVICE,
 UNITED STATES DEPARTMENT OF THE INTERIOR

NAME AND LOCATION OF STRUCTURE

SAINT-GAUDENS NATIONAL HISTORIC SITE - STABLES
 SAINT GAUDENS ROAD, OFF NH RT. 12A SULLIVAN COUNTY NEW HAMPSHIRE

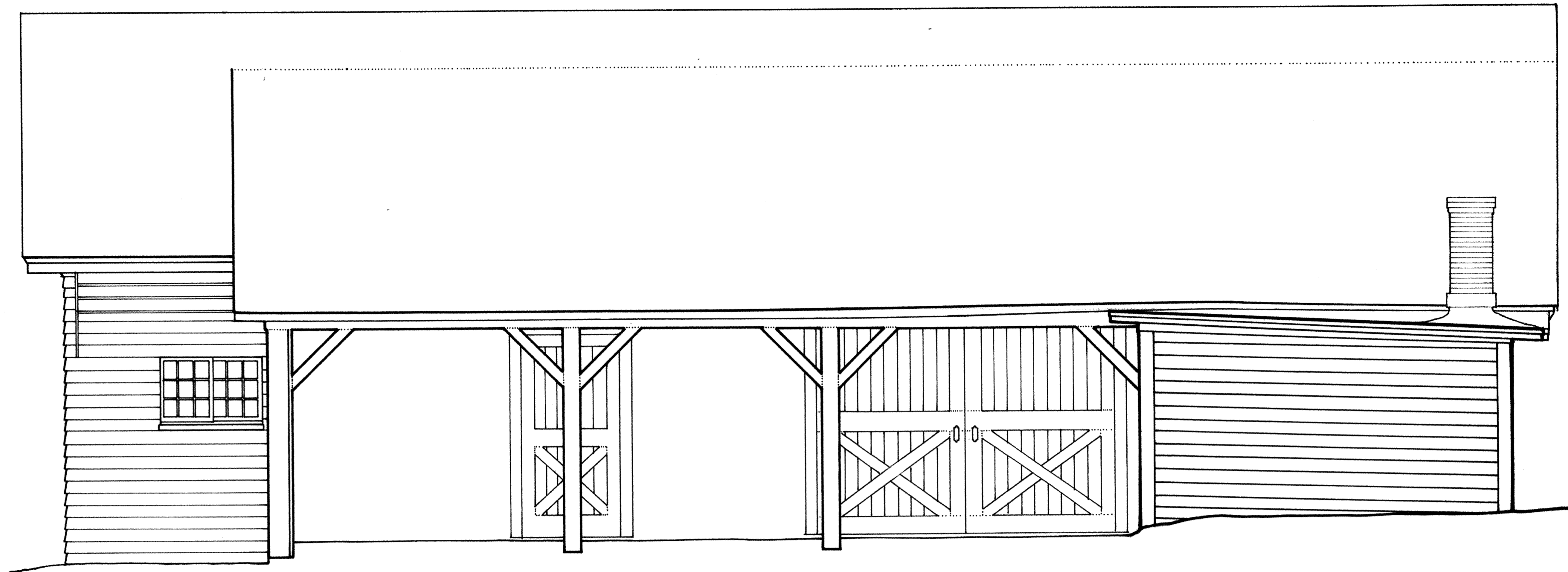
SURVEY NO.

NH-196-G

HISTORIC AMERICAN
 BUILDINGS SURVEY
 SHEET 3 OF 4 SHEETS

LIBRARY OF CONGRESS
INDEX NUMBER

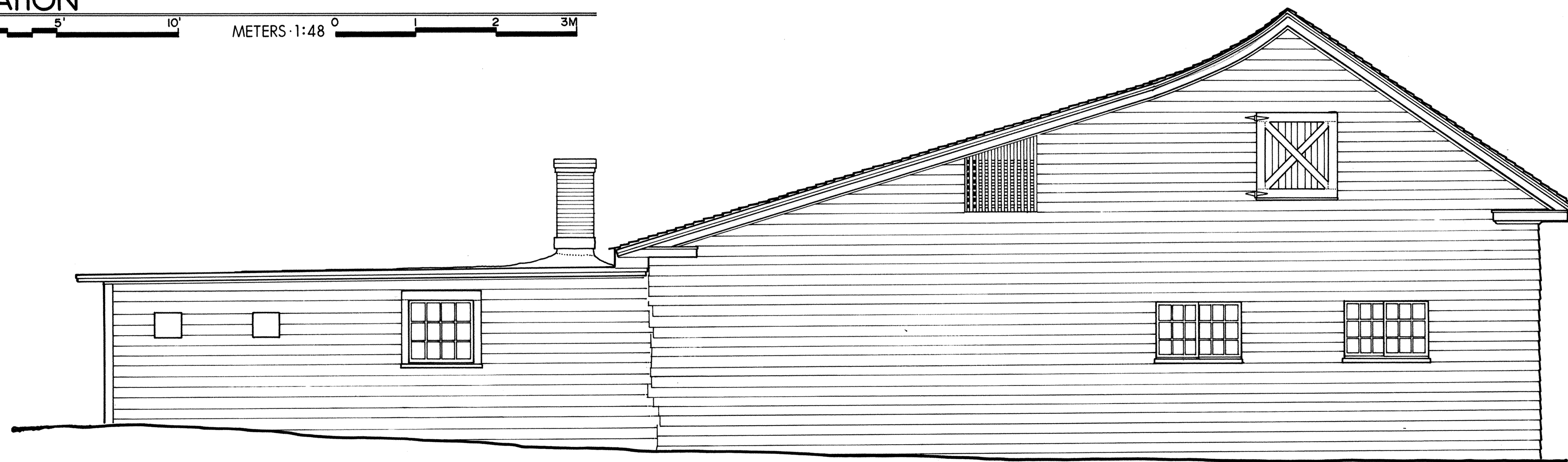
EAST ELEVATION



NORTH ELEVATION

FEET: 1/4" = 1'-0" 0' 1' 5' 10'

METERS: 1:48 0 1 2 3M



DRAWN BY: JACK SCHAFER

ACADIA NATIONAL PARK PROJECT 1976
 OFFICE OF ARCHEOLOGY AND HISTORIC PRESERVATION
 UNDER DIRECTION OF THE NATIONAL PARK SERVICE,
 UNITED STATES DEPARTMENT OF THE INTERIOR

NAME AND LOCATION OF STRUCTURE

SAINT-GAUDENS NATIONAL HISTORIC SITE - STABLES
 SAINT GAUDENS ROAD, OFF NH RT. 12A SULLIVAN COUNTY NEW HAMPSHIRE

SURVEY NO.

NH-196-G

HISTORIC AMERICAN
 BUILDINGS SURVEY
 SHEET 4 OF 4 SHEETS

LIBRARY OF CONGRESS
INDEX NUMBER