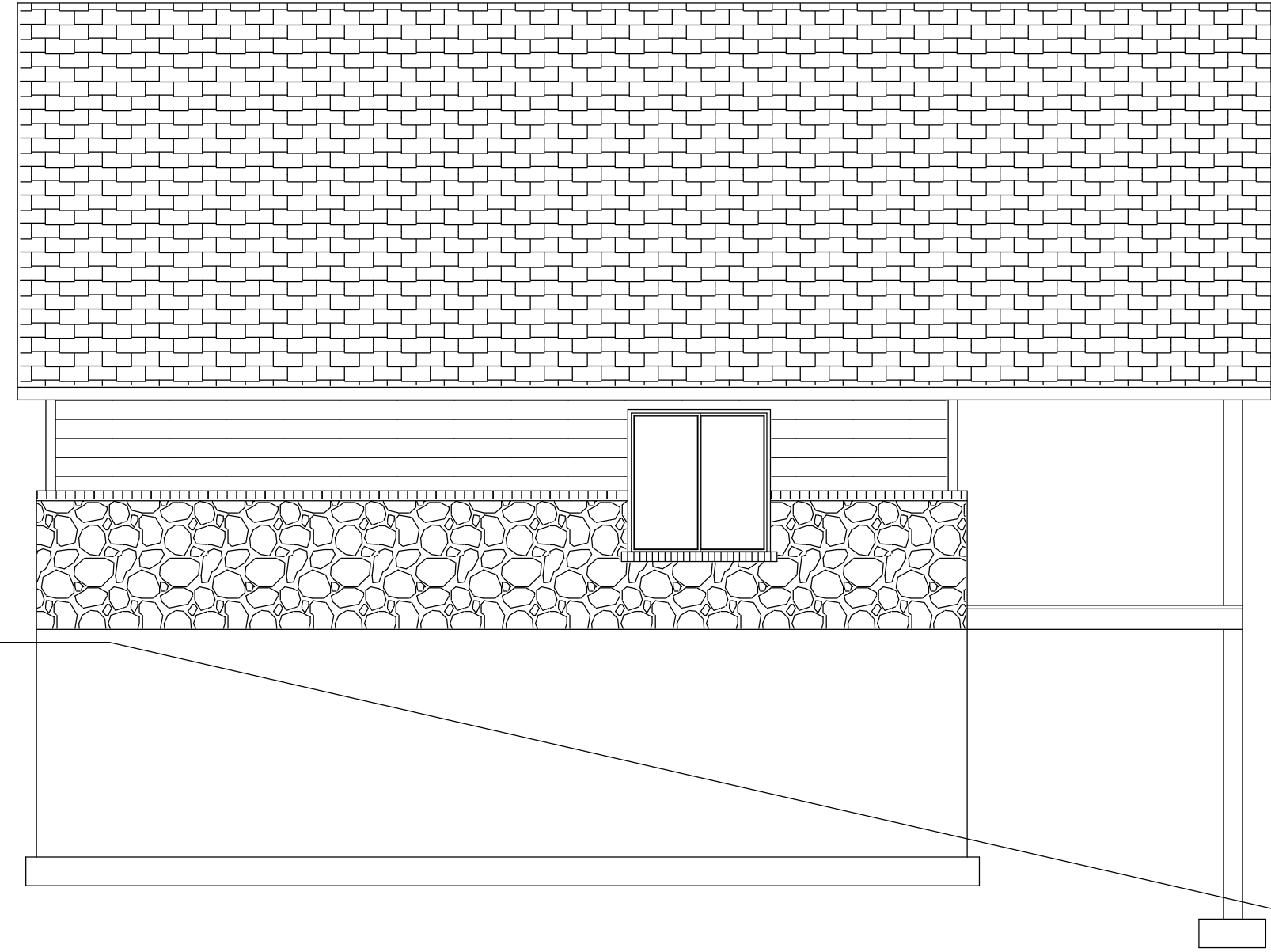


LEFT ELEVATION 3/16" SCALE



RIGHT ELEVATION 3/16" SCALE



FRONT ELEVATION 1/4" SCALE



REAR ELEVATION 1/4" SCALE

[www.cabinsandsheds.com](http://www.cabinsandsheds.com)

These plans are the exclusive property of [www.cabinsandsheds.com](http://www.cabinsandsheds.com) and are available for use, resale, reuse, ownership rights and modification through a special offer by [cabinsandsheds.com](http://cabinsandsheds.com) to those who purchase plans as a collection from [cabinsandsheds.com](http://cabinsandsheds.com). All other reproduction and/or use is prohibited.

IT IS THE RESPONSIBILITY OF THE PURCHASER/BUILDER OF THIS PLAN TO INSURE THAT ALL LOCAL BUILDING CODES AND REQUIREMENTS ARE MET. (STRUCTURAL, SEISMIC, SNOW, WIND, HVAC, ELECTRICAL ETC.)

ELEVATIONS

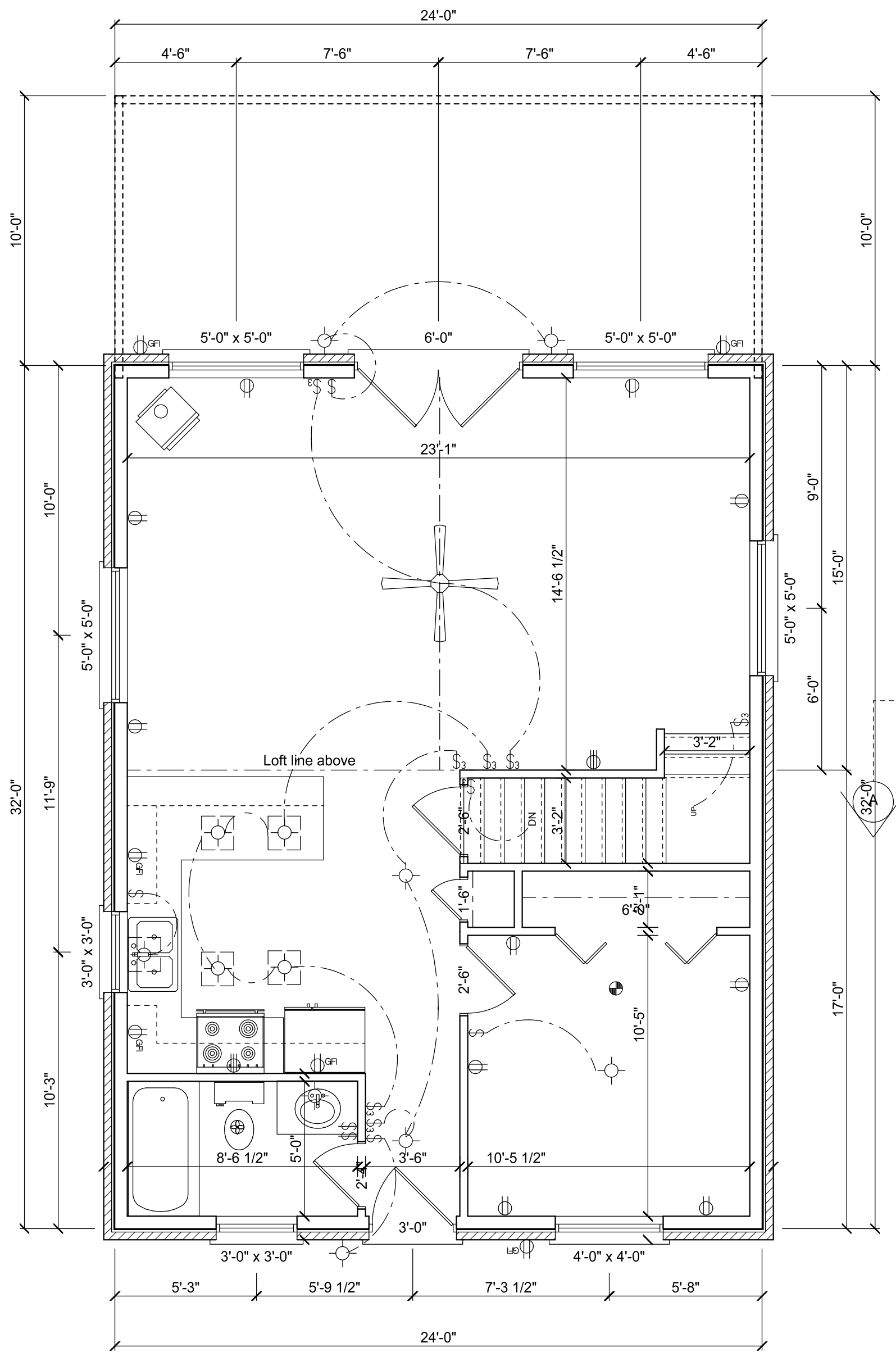
SINGLE USE FOR:

**cabinsandsheds**

SCALE 1/4" = 1'-0" DATE July 31, 2008 APPROVED DRAWN BY REVISIONS

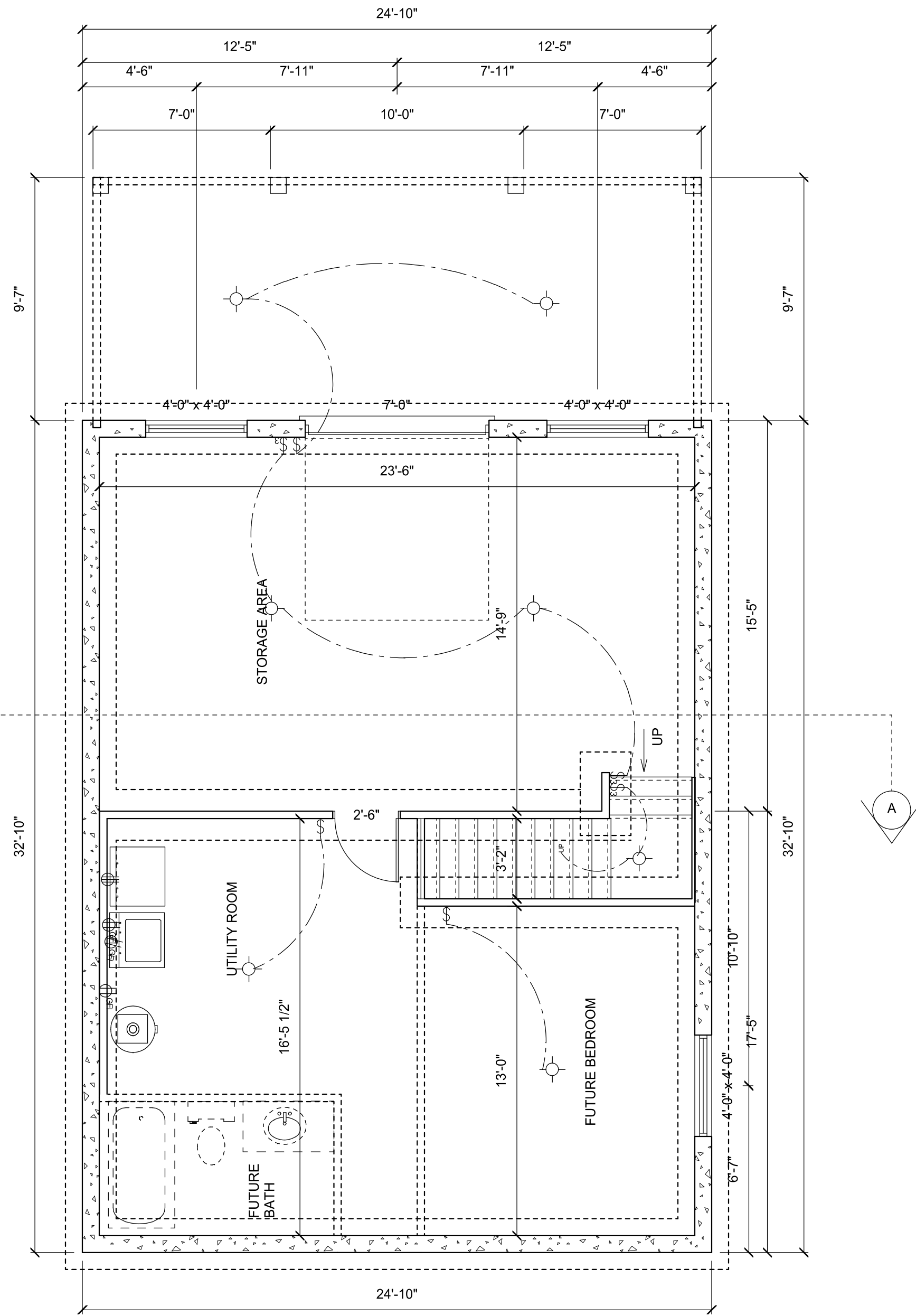
PLAN NAME: CABIN 2

DRAWING NUMBER SHEET 1



# FLOOR PLAN

SCALE: 1/4" = 1'-0"



# BASEMENT PLAN

SCALE: 1/4" = 1'-0"

**cabinsandsheds**

SCALE 1/4" = 1'-0"  
DATE July 31, 2008  
DRAWING NUMBER  
**SHEET 2**

APPROVED  
DRAWN BY  
REVISED  
PLAN NAME: CABIN 2

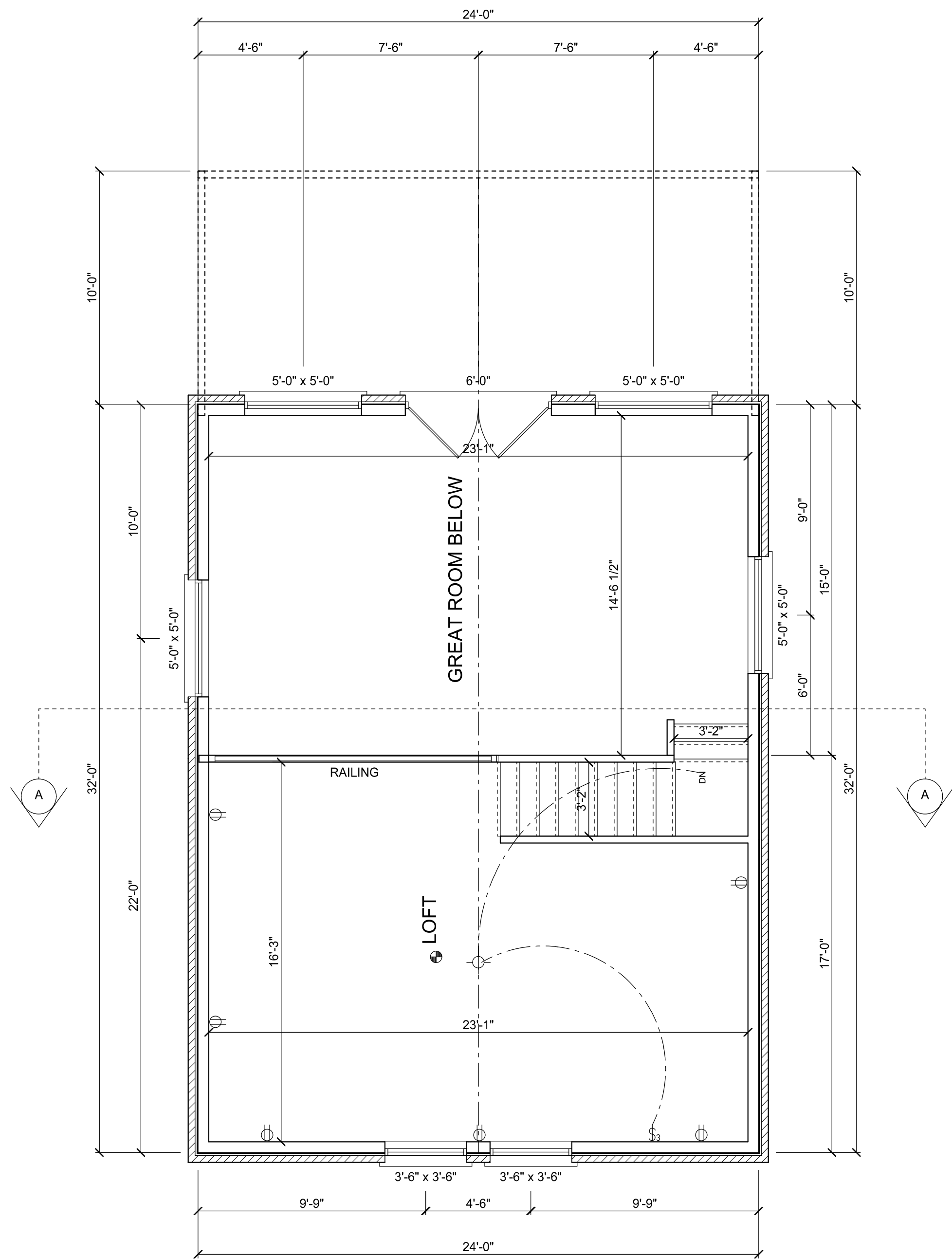
MAIN AND BASEMENT

SINGLE USE FOR:

[www.cabinsandsheds.com](http://www.cabinsandsheds.com)

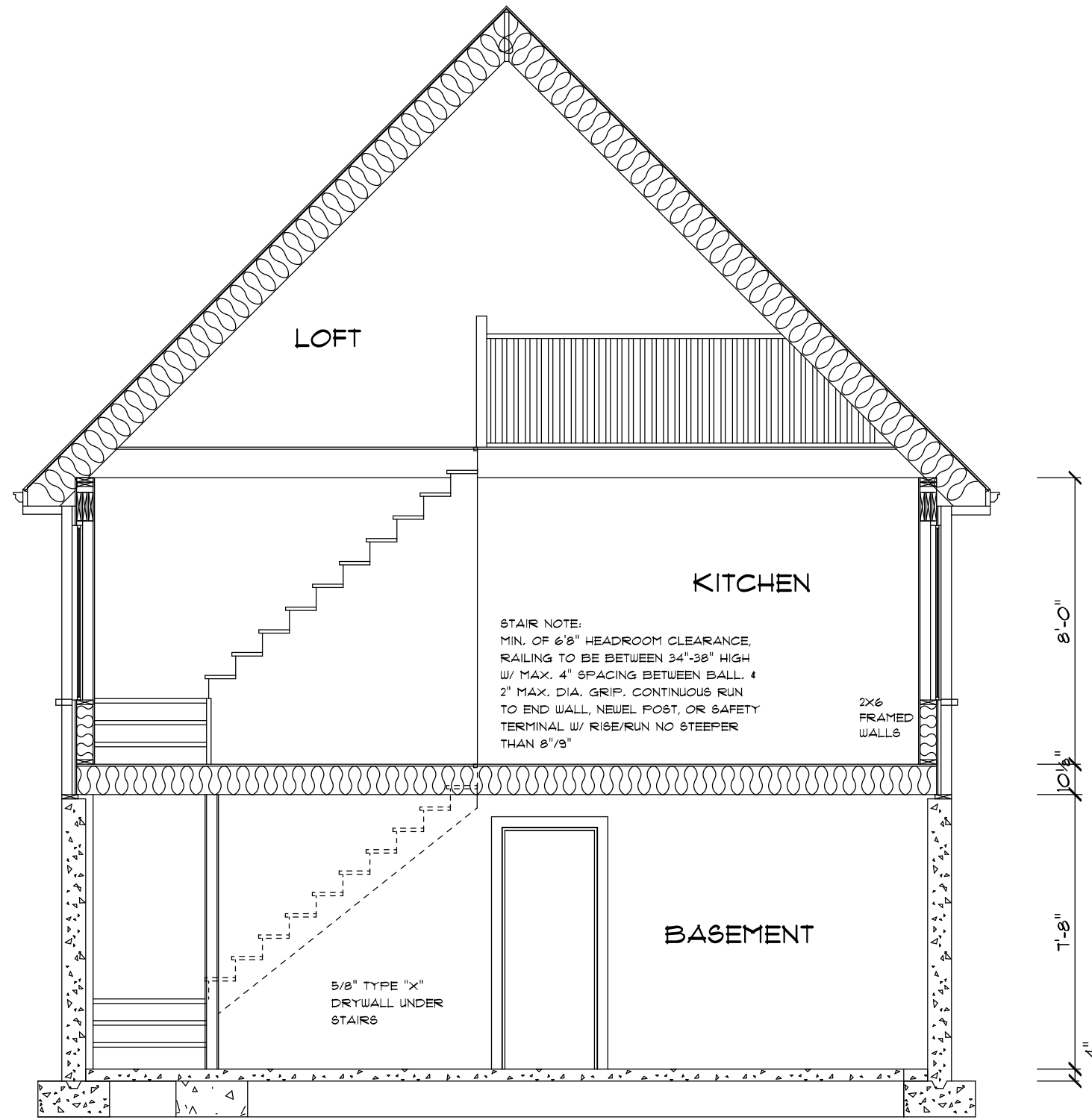
These plans are the exclusive property of [www.cabinsandsheds.com](http://www.cabinsandsheds.com) and are available for use, resale, reuse, ownership rights and modification through a special offer by [cabinsandsheds.com](http://cabinsandsheds.com) to those who purchase plans as a collections from [cabinsandsheds.com](http://cabinsandsheds.com).

All other reproduction and/or use is prohibited  
IT IS THE RESPONSIBILITY OF THE PURCHASER/BUILDER OF THIS PLAN TO INSURE THAT ALL LOCAL BUILDING CODES AND REQUIREMENTS ARE MET.  
(STRUCTURAL, SEISMIC, SNOW, WIND, HVAC, ELECTRICAL ETC.)



# LOFT PLAN

SCALE: 1/4" = 1'-0"



# SECTION THROUGH

SCALE: 1/4" = 1'-0"

[www.cabinsandsheds.com](http://www.cabinsandsheds.com)

These plans are the exclusive property of [www.cabinsandsheds.com](http://www.cabinsandsheds.com) and are available for use, resale, reuse, ownership rights and modification through a special offer by [cabinsandsheds.com](http://cabinsandsheds.com) to those who purchase plans as a collection from [cabinsandsheds.com](http://cabinsandsheds.com). All other reproduction and/or use is prohibited.

IT IS THE RESPONSIBILITY OF THE PURCHASER/BUILDER OF THIS PLAN TO INSURE THAT ALL LOCAL BUILDING CODES AND REQUIREMENTS ARE MET. (STRUCTURAL, SEISMIC, SNOW, WIND, HVAC, ELECTRICAL ETC.)

LOFT AND SECTION

SINGLE USE FOR:

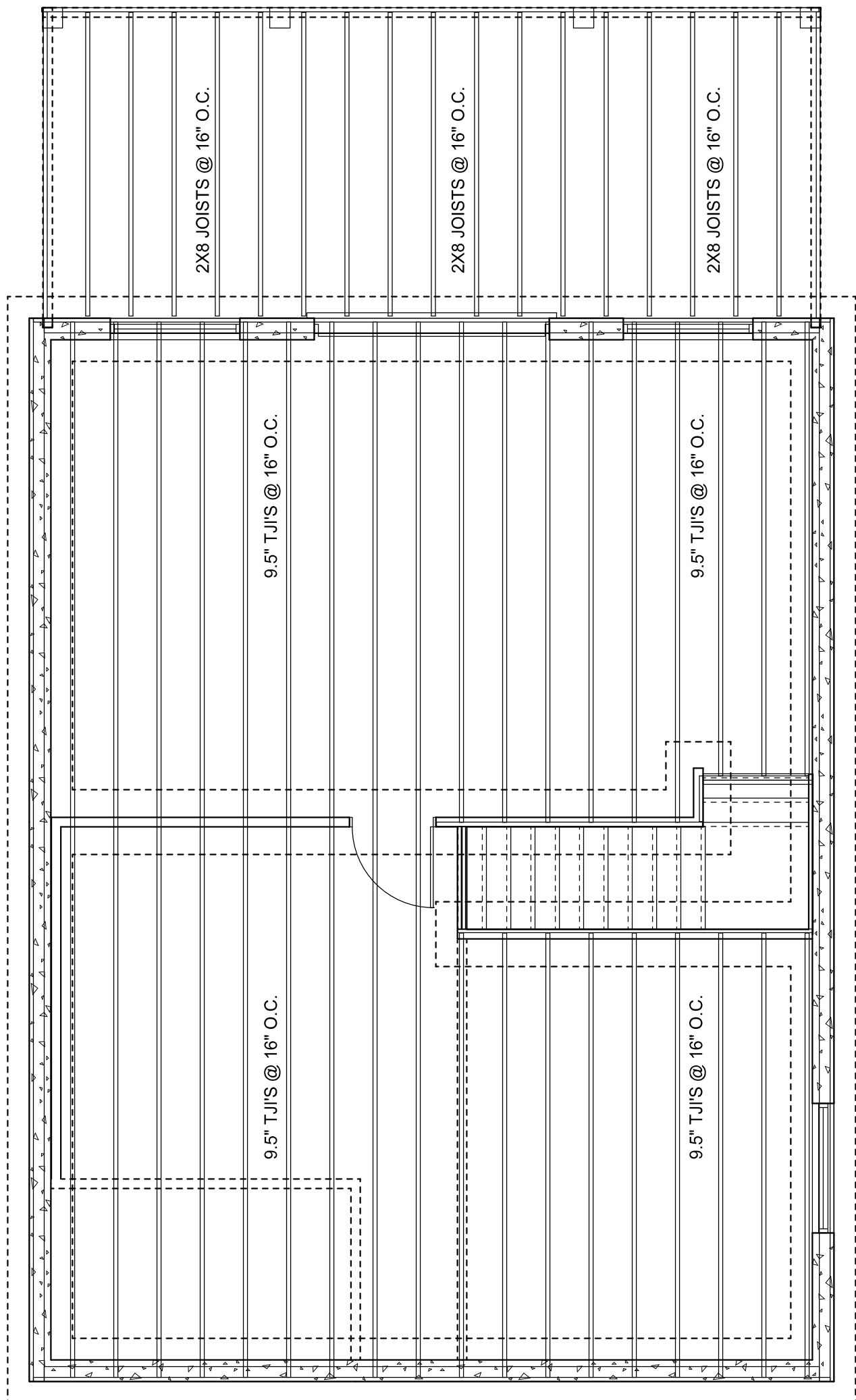
**cabinsandsheds**

SCALE: 1/4" = 1'-0"  
DATE: July 31, 2008

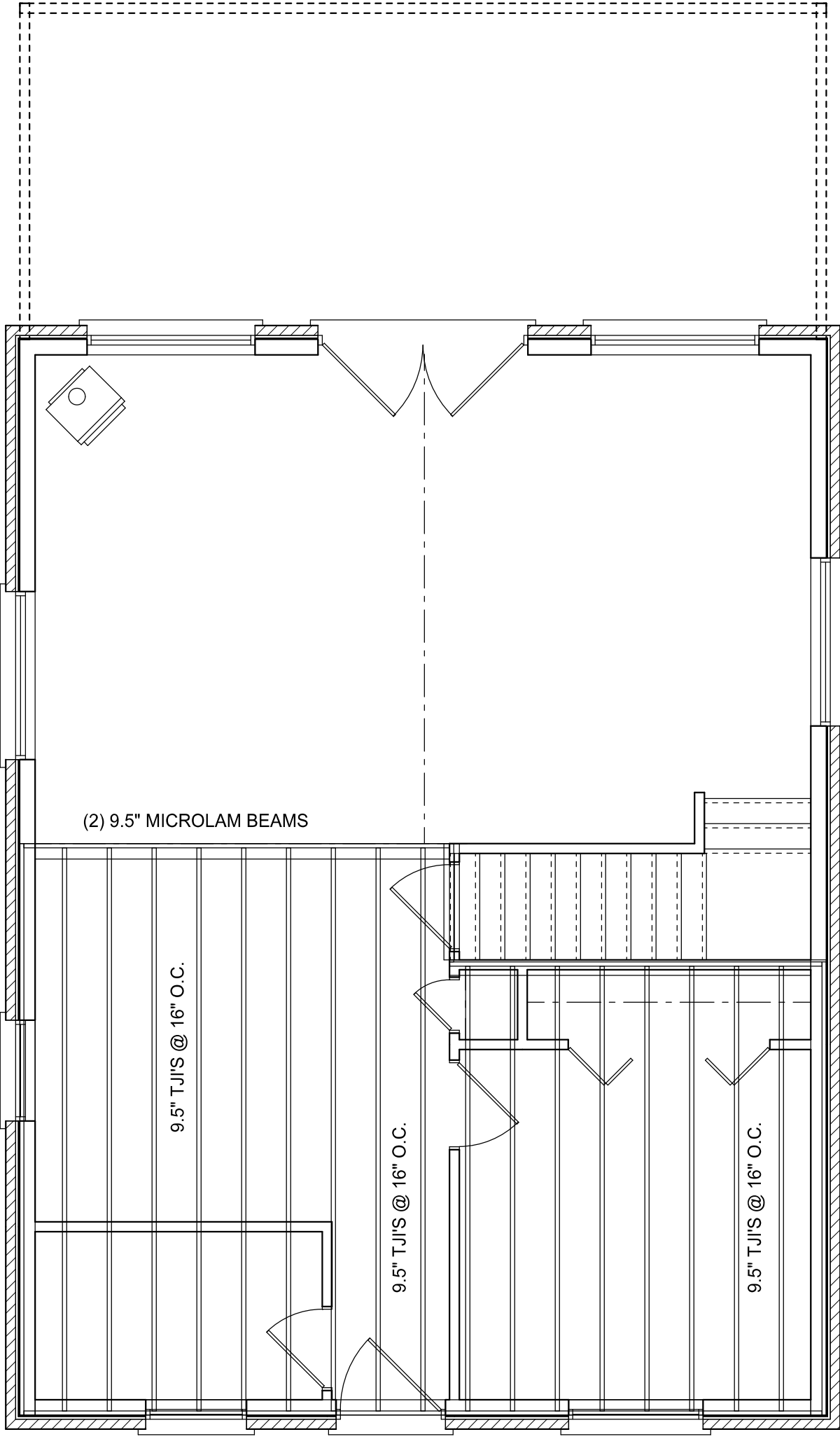
APPROVED  
DRAWN BY  
REVISED

PLAN NAME: CABIN 2

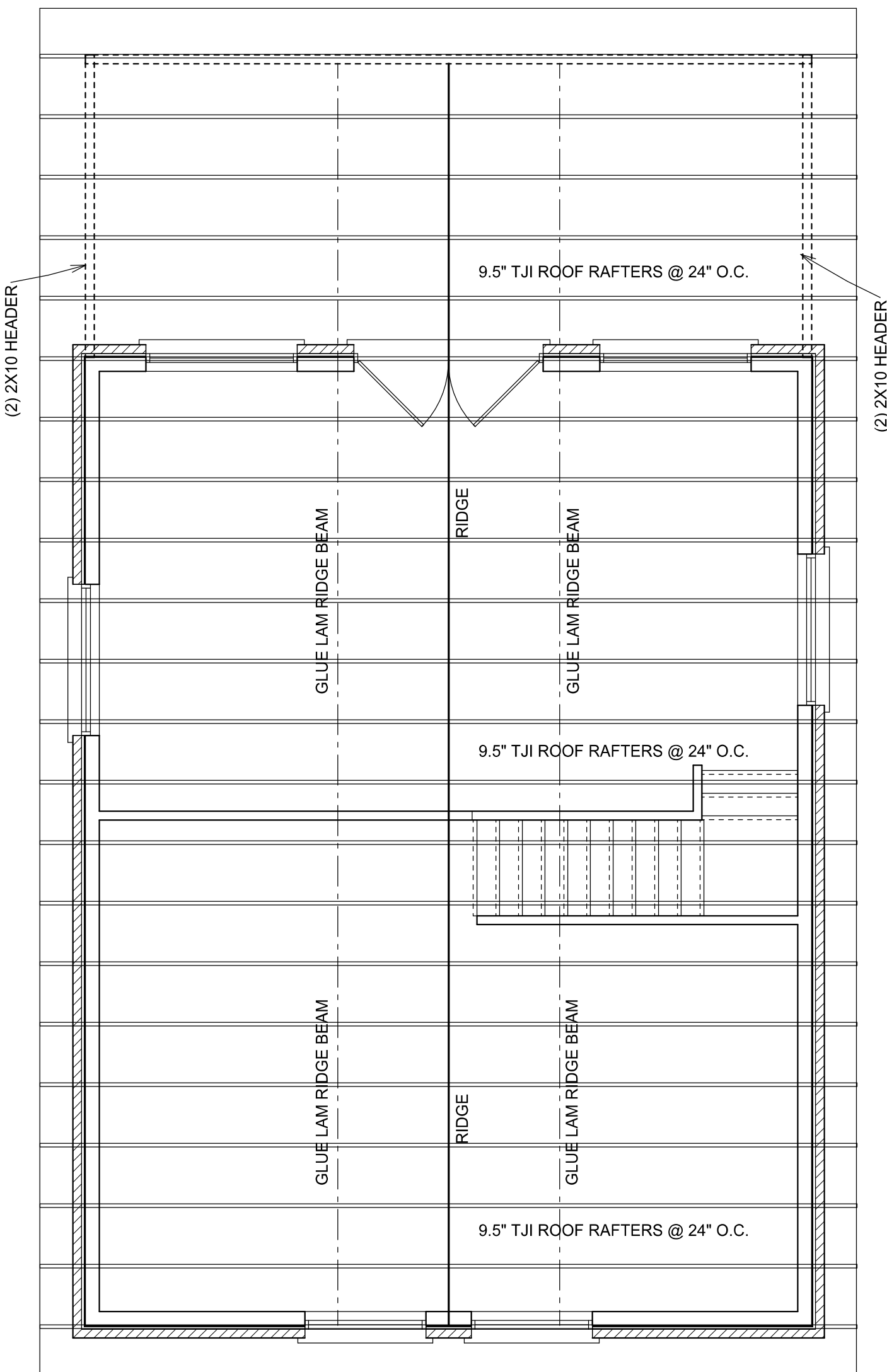
DRAWING NUMBER  
**SHEET 3**



MAIN FLOOR FRAMING



LOFT FLOOR FRAMING



ROOF FRAMING

**cabinsandsheds**

SCALE 1/4" = 1'-0"	APPROVED	DRAWN BY
DATE July 31, 2008		REVISD
DRAWING NUMBER	PLAN NAME: CABIN 2	
<b>SHEET 4</b>		

FLOOR AND ROOF FRAMING

SINGLE USE FOR:

[www.cabinsandsheds.com](http://www.cabinsandsheds.com)

These plans are the exclusive property of [www.cabinsandsheds.com](http://www.cabinsandsheds.com) and are available for use, resell, reuse, ownership rights and modification through a special offer by [cabinsandsheds.com](http://cabinsandsheds.com) to those who purchase plans as a collection from [cabinsandsheds.com](http://cabinsandsheds.com). All other reproduction and/or use is prohibited.

IT IS THE RESPONSIBILITY OF THE PURCHASER/BUILDER OF THIS PLAN TO INSURE THAT ALL LOCAL BUILDING CODES AND REQUIREMENTS ARE MET. (STRUCTURAL, SEISMIC, SNOW, WIND, HVAC, ELECTRICAL ETC.)