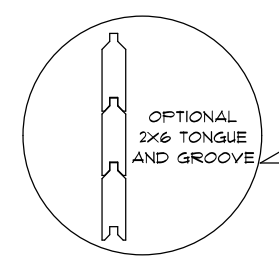
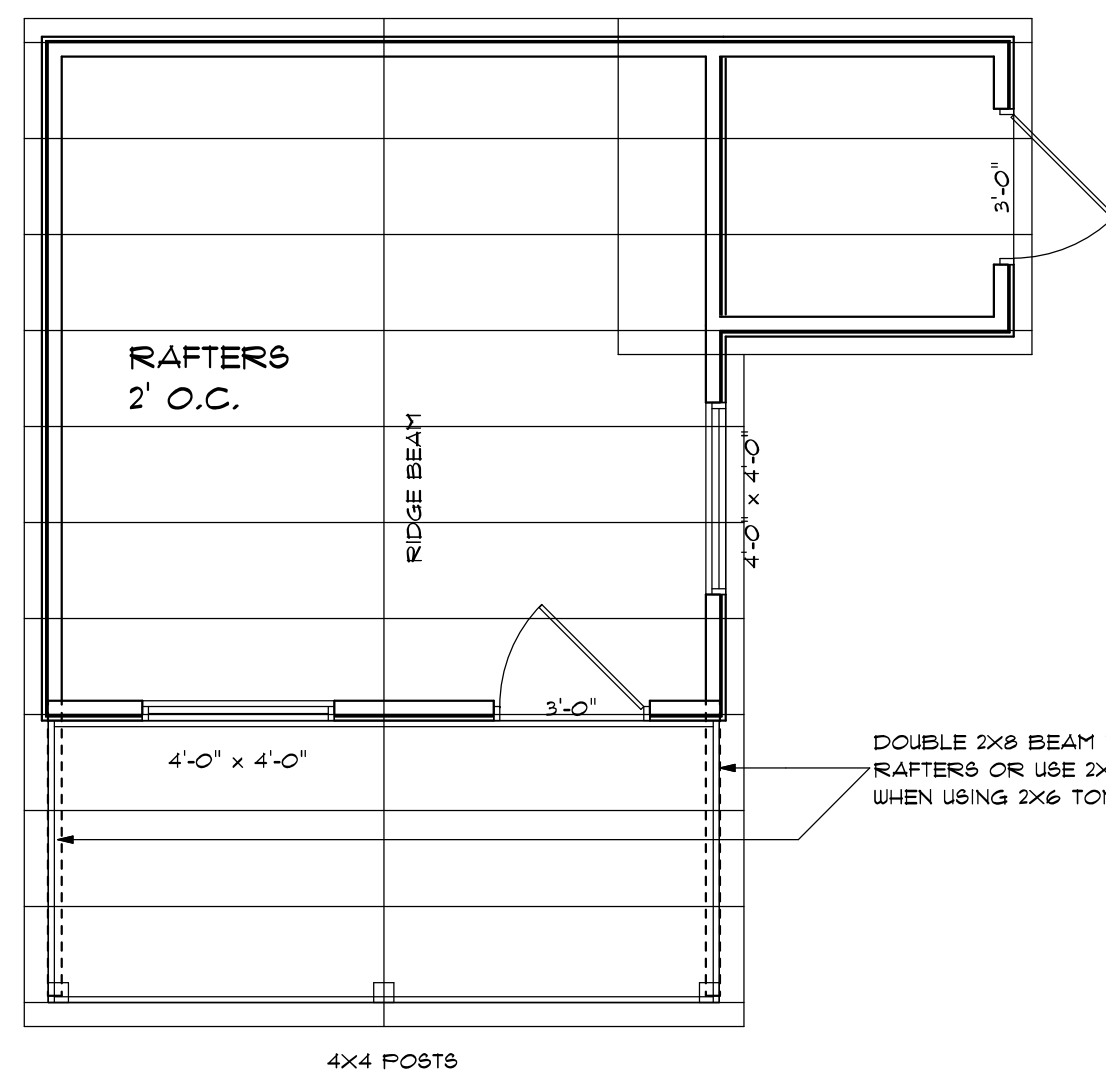
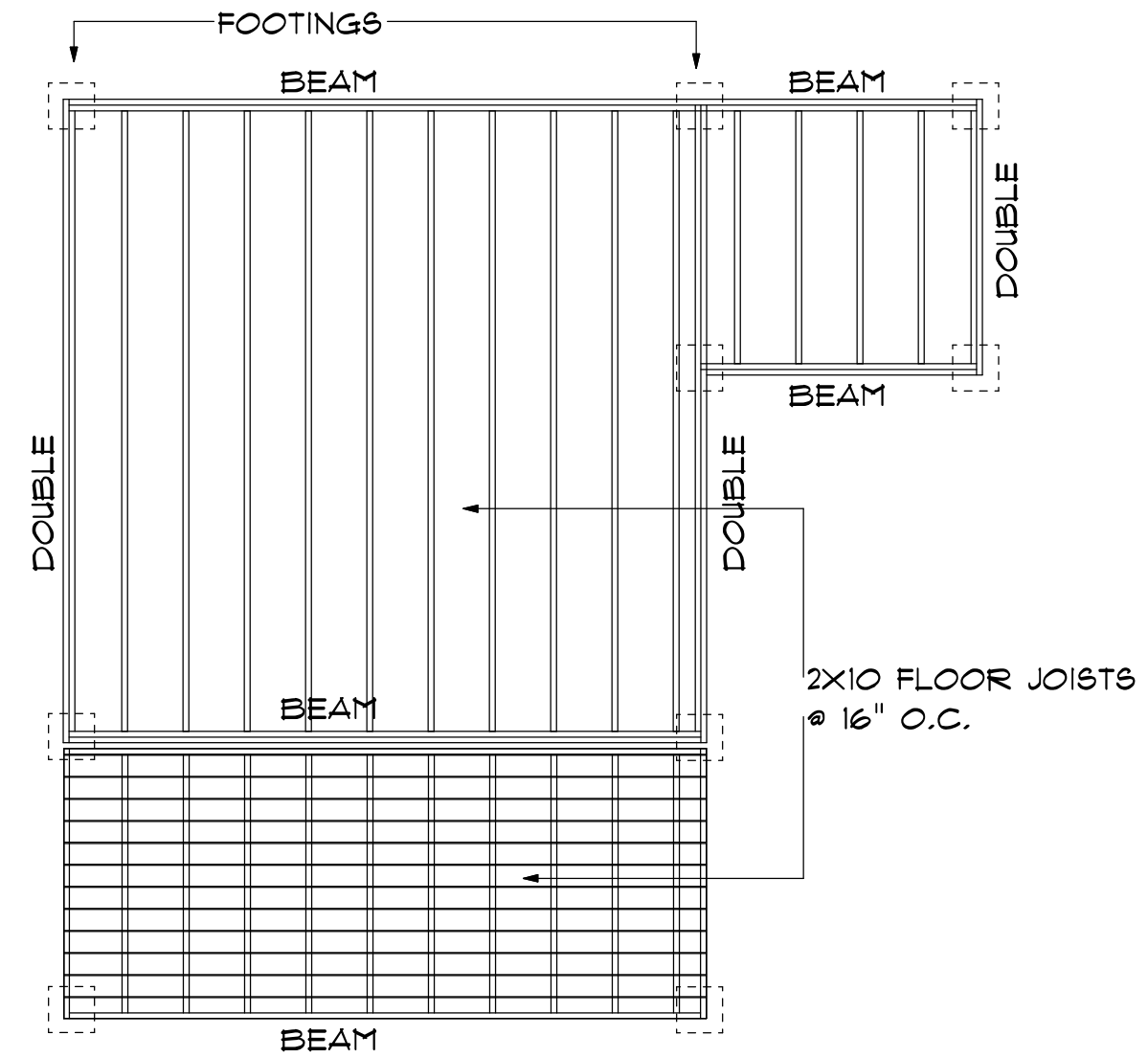
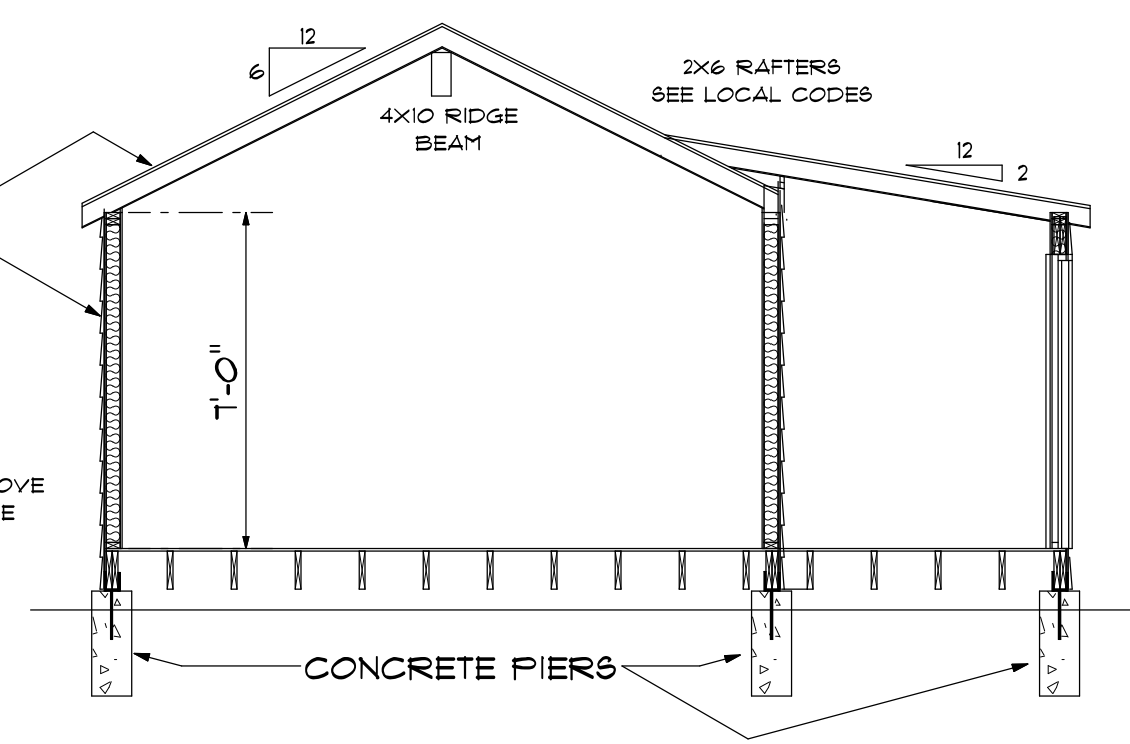


2X6 TONGUE AND GROOVE
EXTENDED TO FORM RAIL
AND STEPPED CANTILEVER



OPTIONAL 2X6 TONGUE AND GROOVE
WALLS AND ROOF IN PLACE OF SHEATHING
AND SIDING.
STUD WALL FRAMING AND ROOF RAFTERS
TO REMAIN THE SAME WITH TONGUE AND GROOVE
APPLIED TO EXTERIOR OF STRUCTURAL FRAME



www.cabinsandsheds.com

These plans are the exclusive property of www.cabinsandsheds.com and are available for use, resale, reuse, ownership rights and modification through a special offer by cabinsandsheds.com to those who purchase plans as a collection from cabinsandsheds.com. All other reproduction and/or use is prohibited.

IT IS THE RESPONSIBILITY OF THE PURCHASER/BUILDER OF THIS PLAN TO INSURE THAT ALL LOCAL BUILDING CODES AND REQUIREMENTS ARE MET. (STRUCTURAL, SEISMIC, SNOW, WIND, HVAC, ELECTRICAL ETC.)

GARDEN HOUSE PLAN

SINGLE USE FOR:

cabinsandsheds

SCALE 1/4" = 1'-0"	APPROVED	DRAWN BY
DATE August 01, 2008	REVISIONS	REVISED
DRAWING NUMBER	PLAN NAME: GARDEN HOUSE	
SHEET 1		