



THE POTTING SHED

CONSTRUCTION DRAWINGS

Corresponds with the garden shed built for Progressive Farmer's "Idea House & Farmstead," August 2004 issue, page 42

Topped with a handsome roof and trimmed with custom-cut rafter ends, the Progressive Farmer potting shed is attractive and functional. At 8-feet by 10-feet, it's designed to keep cutting and cutoffs to a minimum. A 6-foot roof overhang offers shade for working on the handy potting shelf. Two work surfaces have been included inside, and three windows give the shed great air circulation and ample lighting.

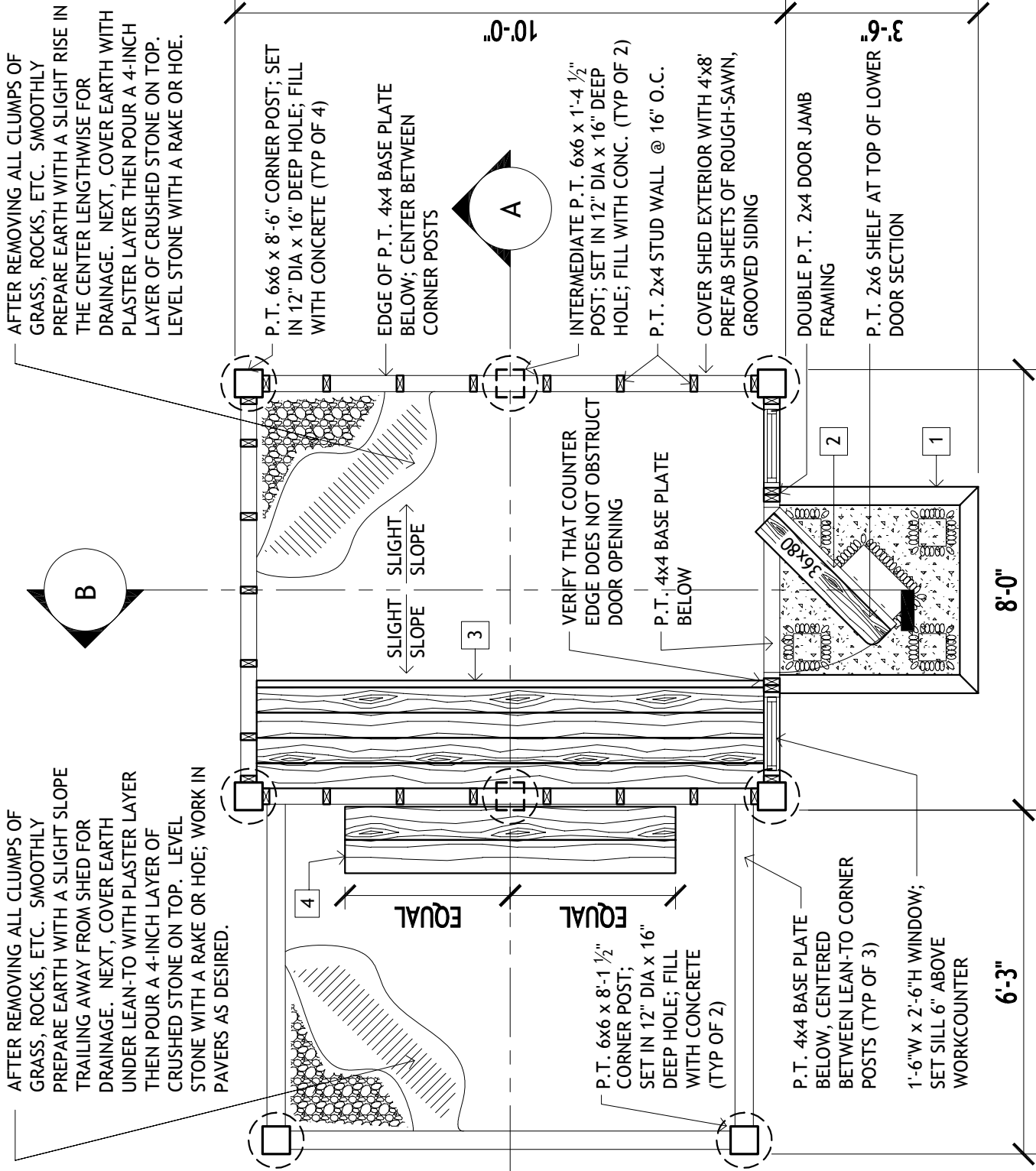
PROJECT PLAN INDEX

FOUNDATION / FLOOR PLAN	2
ROOF PLAN	3
SECTION A	4
SECTION B	5
EXTERIOR ELEVATIONS	6-9
DETAILS	10
MATERIAL LIST	11

THE POTTING SHED

FOUNDATION / FLOOR PLAN
(scale 3/8" = 1' 0")

PF-1D-1144



x SEE DETAIL/NOTES PAGE FOR DETAILS ON CONSTRUCTION

THE POTTING SHED

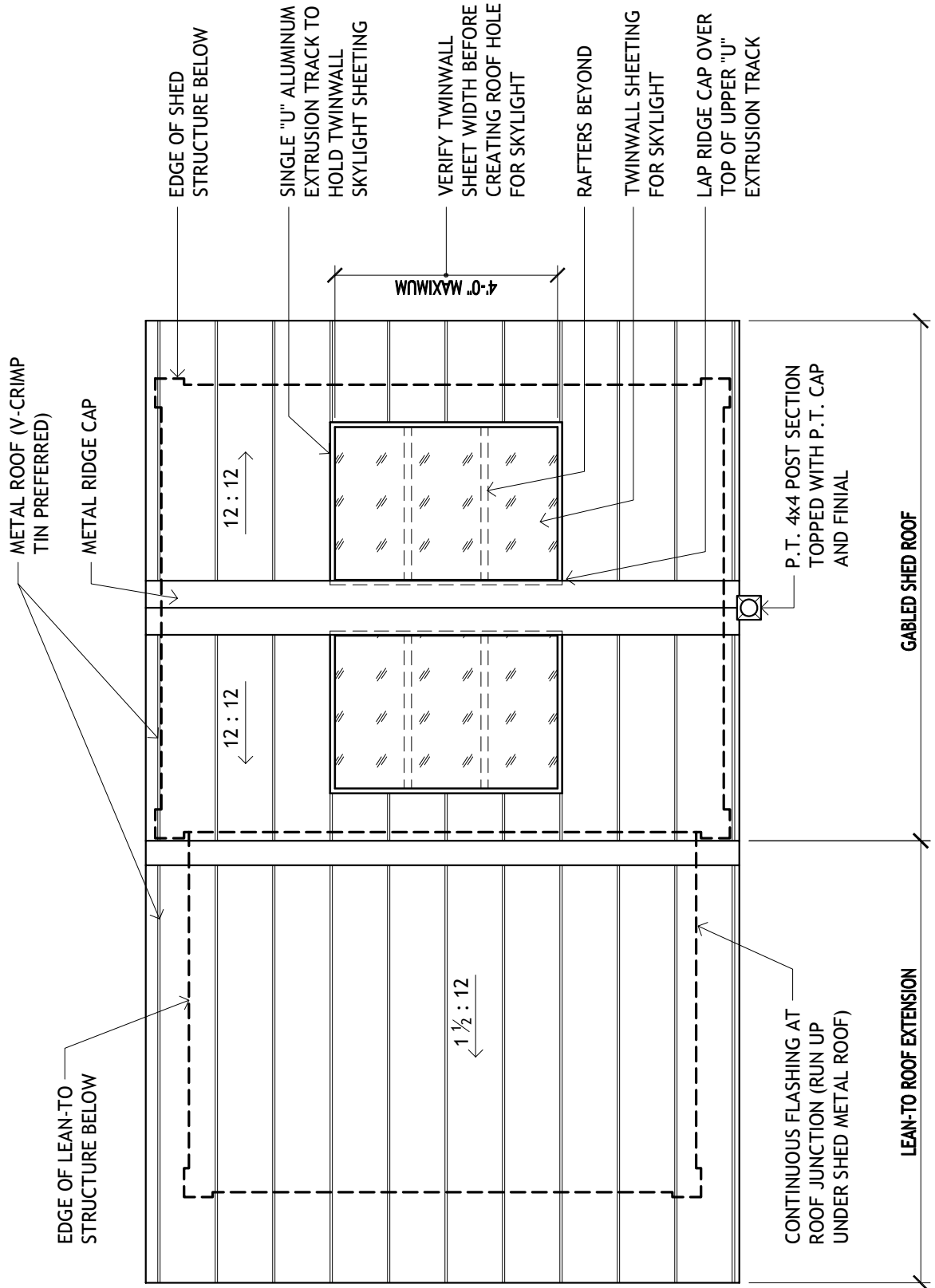
ROOF PLAN
(scale 3/8" = 1'0")

PF-1D-1144

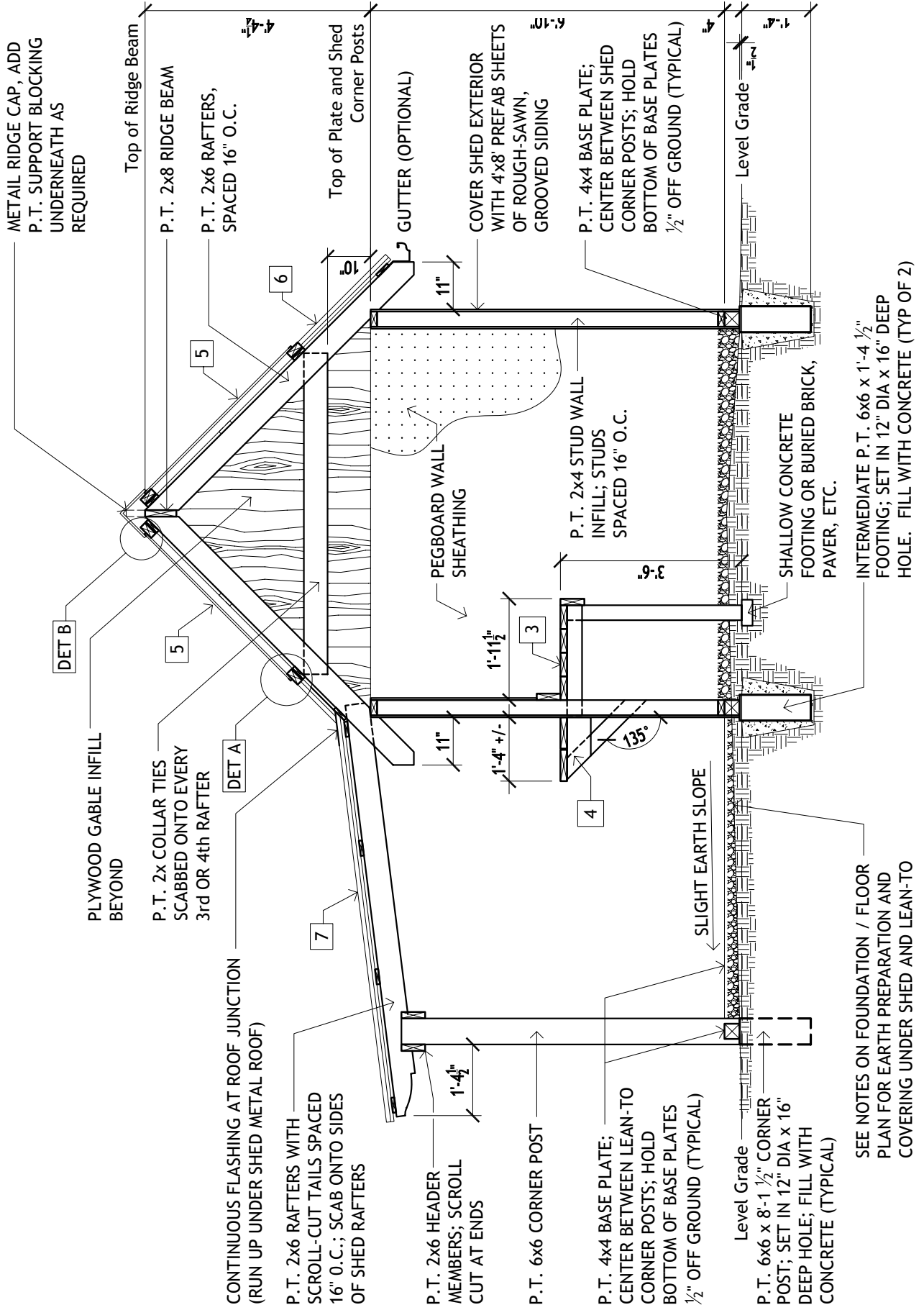
NOTES FOR SKYLIGHT CONSTRUCTION:

*TO ORDER TWINWALL POLYCARBONATE SHEETS, CONTACT CHARLEY'S GREENHOUSE & GARDEN COMPANY, 1-800-322-4707 OR ON THE WEB AT www.charleysgreenhouse.com

*TO ORDER SINGLE "U" EXTRUSION TRACK AND ASSOCIATED HARDWARE, CALL CAPITOL AGRICULTURAL SERVICE & SUPPLY (CASSCO) AT 1-800-933-5888.



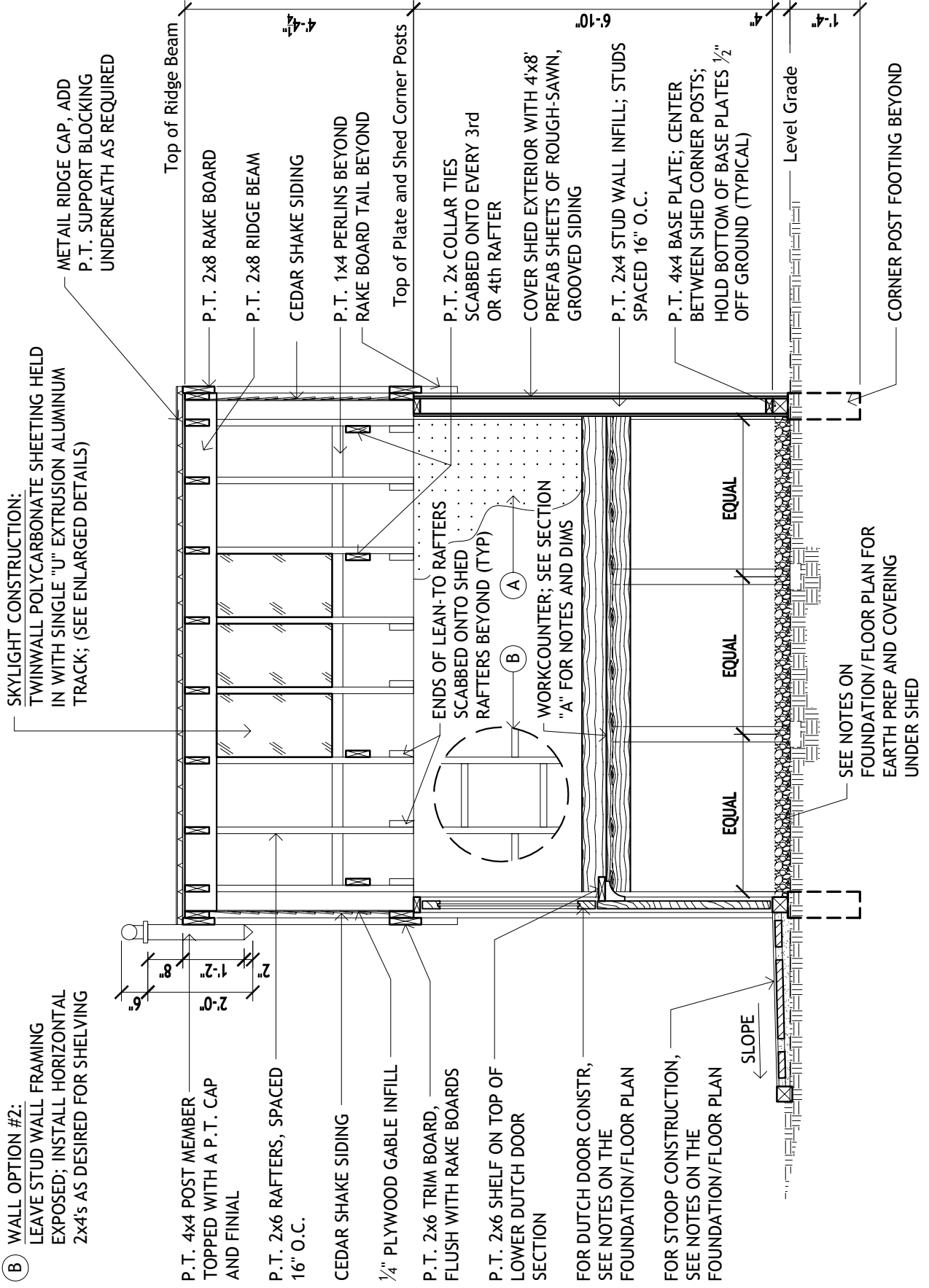
x SEE DETAIL/NOTES PAGE FOR DETAILS ON CONSTRUCTION



SEE NOTES ON FOUNDATION / FLOOR PLAN FOR EARTH PREPARATION AND COVERING UNDER SHED AND LEAN-TO

(A) WALL OPTION #1:
PEGBOARD WALL SHEATHING

(B) WALL OPTION #2:
LEAVE STUD WALL FRAMING
EXPOSED; INSTALL HORIZONTAL
2x4s AS DESIRED FOR SHELVING



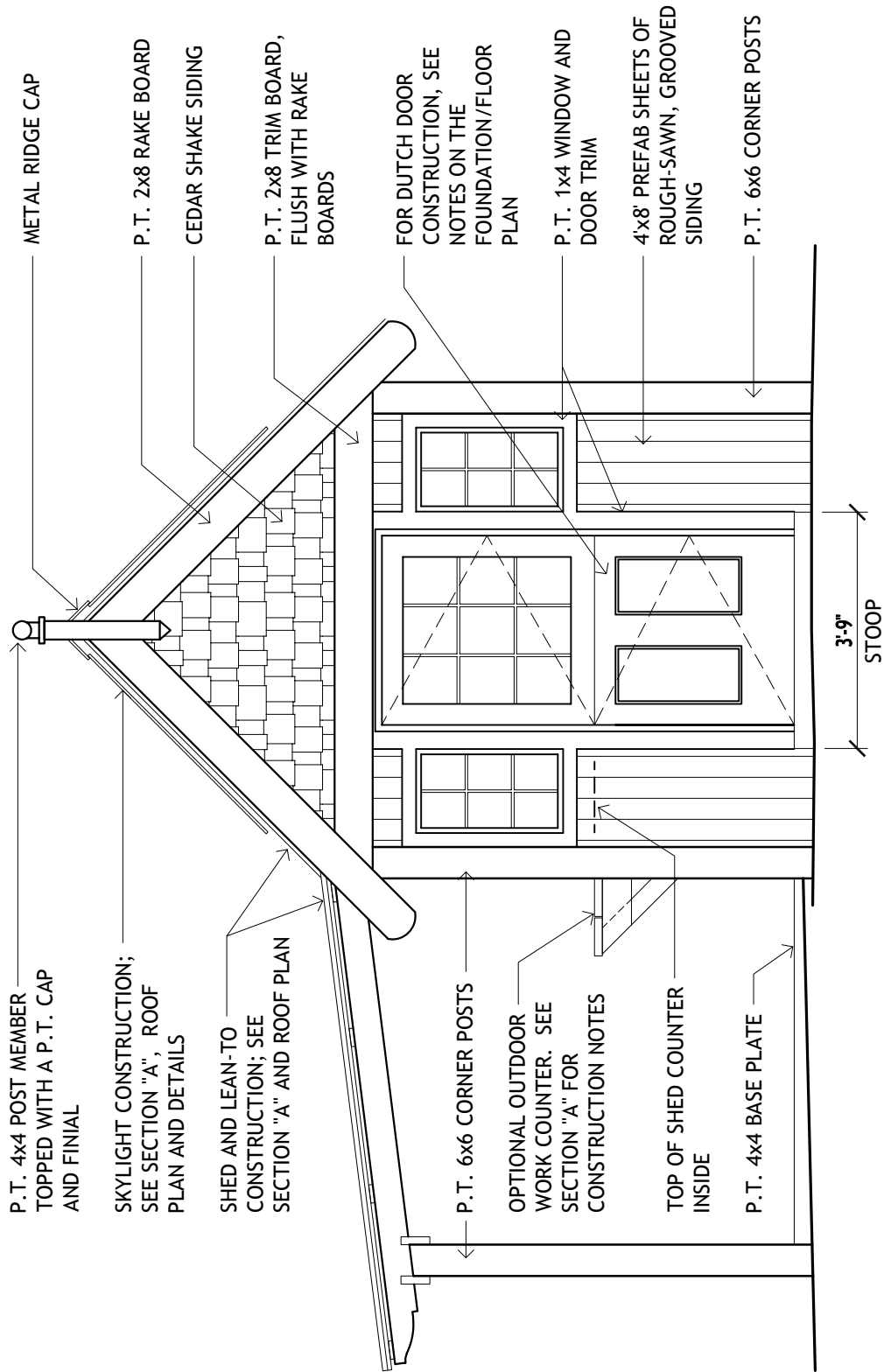
(A)

(B)

THE POTTING SHED

FRONT ELEVATION
(scale 3/8" = 1' 0")

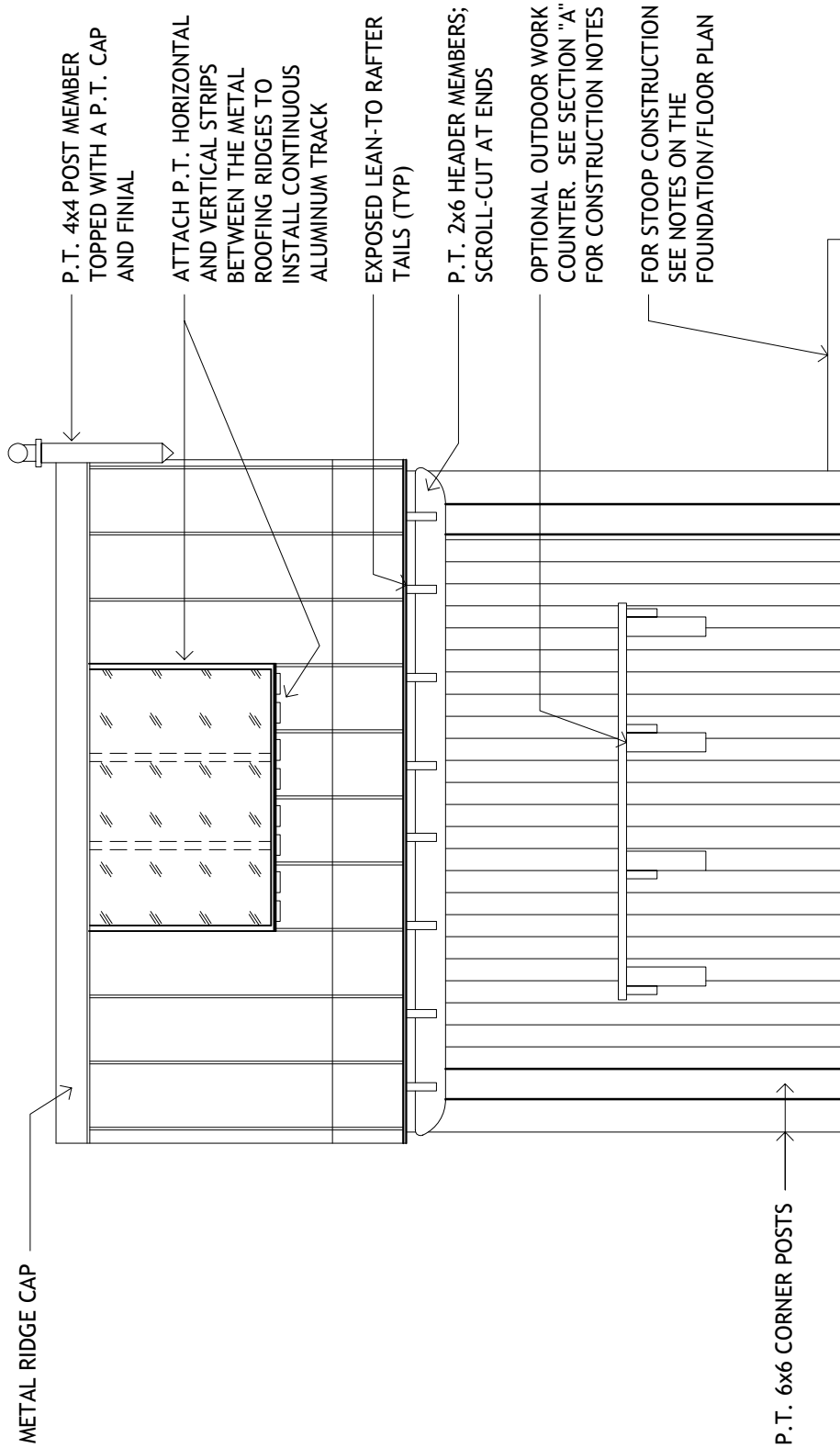
PF-1D-1144

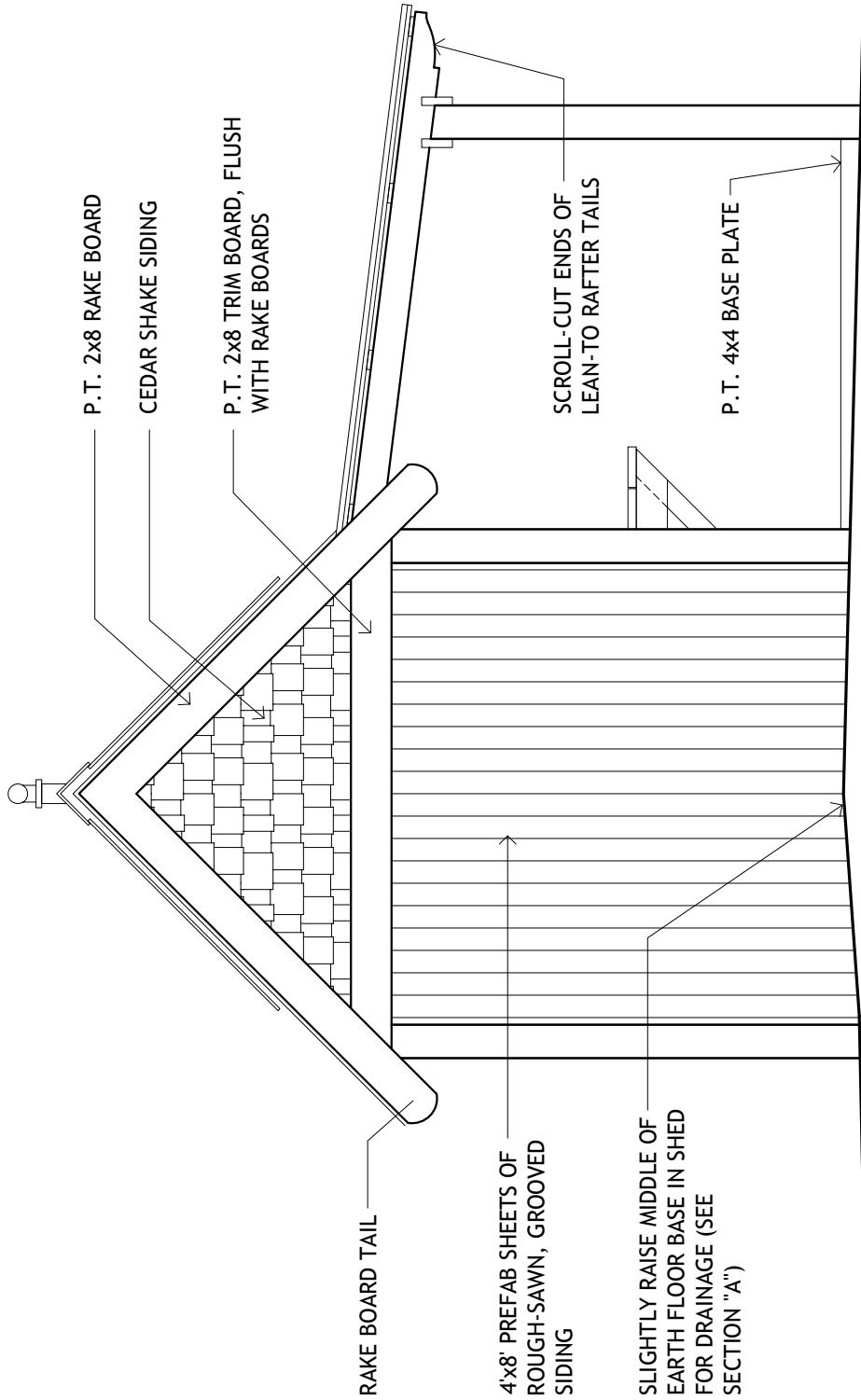


THE POTTING SHED

LEFT ELEVATION
(scale 3/8" = 1' 0")

PF-1D-1144

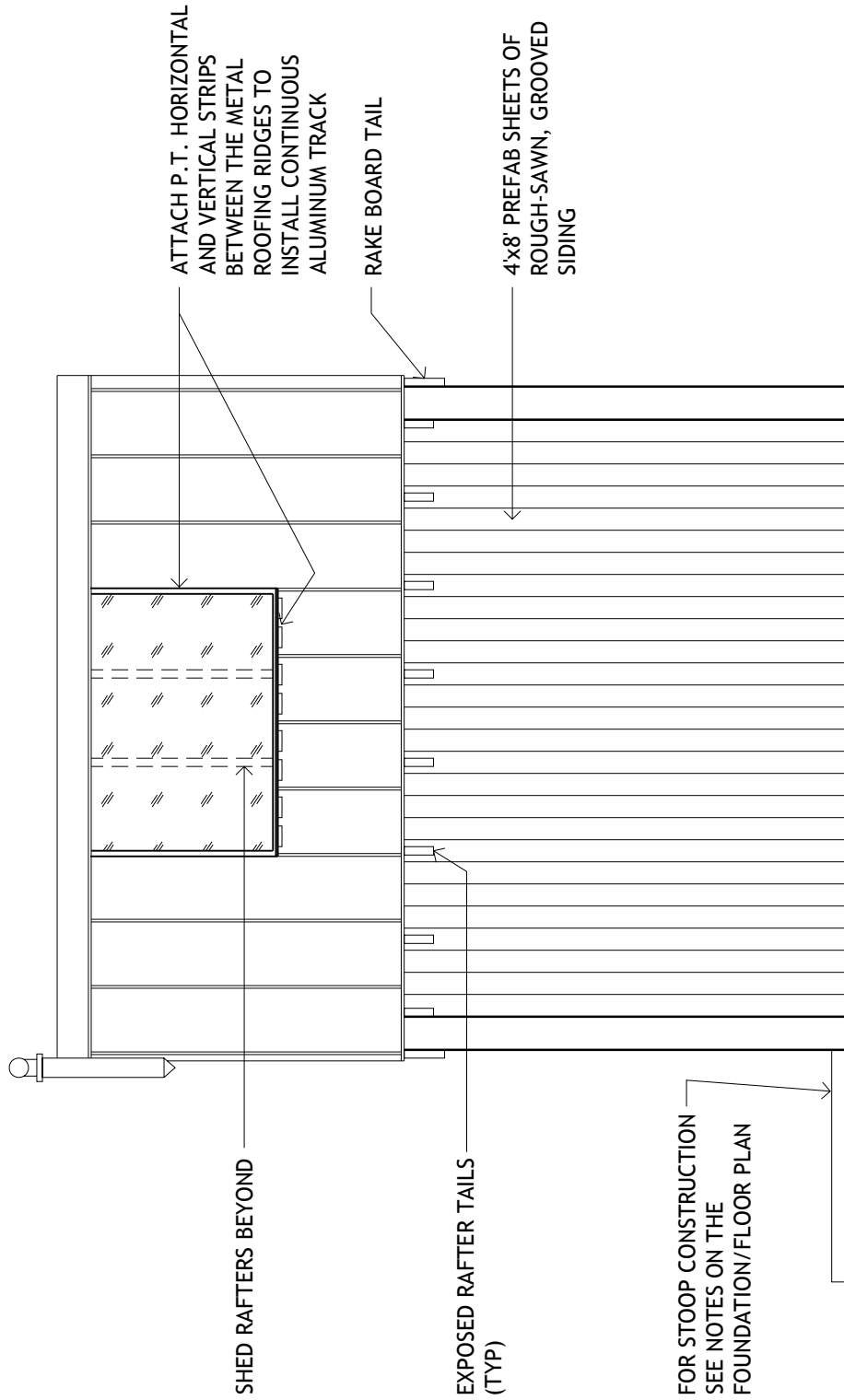




THE POTTING SHED

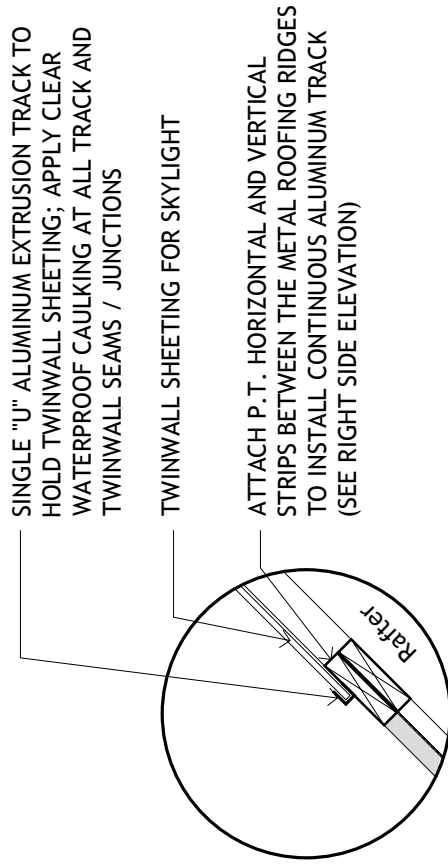
RIGHT ELEVATION
(scale 3/8" = 1' 0")

PF-1D-1144



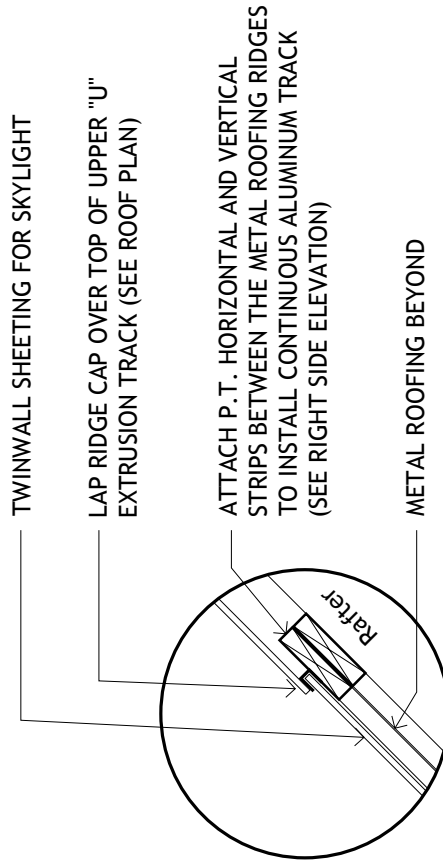
CONSTRUCTION NOTES:

- 1 **STOOP CONSTRUCTION:**
FORM STOOP BORDER WITH P.T. 4x4 MEMBERS. NEXT SPREAD A THIN LAYER OF FINELY CRUSHED STONE. ADD LAYER OF CEMENT, THEN POSITION / PRESS IN PAVERS AS DESIRED.
(OPTIONAL: PLACE SMOOTH PEBBLES AROUND PAVER EDGES AS A FINISHING TOUCH)
- 2 **DUTCH DOOR CONSTRUCTION:**
CUT A STANDARD 3'-0" x 6'-8" EXTERIOR WOOD DOOR IN HALF. NEXT CUT ROUGHLY 2" OFF THE TOP OF THE LOWER HALF; THEN ATTACH A P.T. 2x6 SHELF, PROTRUDING INWARD. INSTALL TWO HINGES FOR BOTH UPPER AND LOWER DOOR SECTIONS, SO THAT THEY SWING SEPARATELY.
- 3 **SHED WORK COUNTER CONSTRUCTION:**
CONSTRUCT WITH P.T. 2x6's AND P.T. 4x4 SUPPORT POSTS. SEE "SECTION A" FOR FURTHER NOTES AND DIMENSIONS. VERIFY THAT THE COUNTER EDGE DOES NOT OBSTRUCT DOOR OPENING
- 4 **OPTIONAL OUTDOOR WORK COUNTER:**
CONSTRUCT WITH P.T. 2x8's AND P.T. 4x4 SUPPORT POSTS. SEE SECTION "A" FOR FURTHER NOTES AND DIMENSIONS.
- 5 **SKYLIGHT CONSTRUCTION:**
TWINWALL POLYCARBONATE SHEETING HELD IN WITH SINGLE "U" EXTRUSION ALUMINUM TRACKING, ELEVATED ABOVE ROOF RIDGES WITH P.T. BLOCKING. (SEE ENLARGED DETAILS)
- 6 **SHED ROOF CONSTRUCTION:**
METAL ROOF (V-CRIMP PREFERRED) SET ON TOP OF P.T. 1x4 PERLINS, SPACED 2'-0" O.C.
- 7 **LEAN-TO ROOF CONSTRUCTION:**
METAL ROOF (V-CRIMP PREFERRED) SET ON TOP OF P.T. 1x4 PERLINS, SPACED 2'-4" O.C.



DETAIL A

SCALE: 1 1/2" = 1'-0"



DETAIL B

SCALE: 1 1/2" = 1'-0"

SINGLE "U" ALUMINUM EXTRUSION TRACK TO HOLD TWINWALL SHEETING; APPLY CLEAR WATERPROOF CAULKING AT ALL TRACK AND TWINWALL SEAMS / JUNCTIONS

TWINWALL SHEETING FOR SKYLIGHT

ATTACH P.T. HORIZONTAL AND VERTICAL STRIPS BETWEEN THE METAL ROOFING RIDGES TO INSTALL CONTINUOUS ALUMINUM TRACK (SEE RIGHT SIDE ELEVATION)

TWINWALL SHEETING FOR SKYLIGHT

LAP RIDGE CAP OVER TOP OF UPPER "U" EXTRUSION TRACK (SEE ROOF PLAN)

ATTACH P.T. HORIZONTAL AND VERTICAL STRIPS BETWEEN THE METAL ROOFING RIDGES TO INSTALL CONTINUOUS ALUMINUM TRACK (SEE RIGHT SIDE ELEVATION)

METAL ROOFING BEYOND

This materials list is intended only as a guide provided to facilitate the pricing of a new shed. You should amend this list as required by the building conditions of your particular site and location.

The Designer accepts no responsibility for the specific quantities or quality of the materials listed. The builder of each house must review these drawings and materials list and judge for himself the suitability of this shed for your specific site. The material list should be modified to reflect finish material selections such as paint, stain, floor coverings, cabinets and countertops, ductwork, wiring, piping, specific light fixtures, exterior patio and etc. The price of your new shed should include labor and materials for all the items listed. But is not necessarily limited to the following list. VERIFY ALL MEASUREMENTS LISTED.

Plan# SL-019

1. General Requirements

- A. Codes, Zoning and Covenants.
- B. Miscellaneous Fees:
 - Lot Cost
 - Building and Utility Permit Fees
 - Utility Hook-up Fees
- C. Special Services
 - Commissions
 - Financing
 - Surveying (check permanent & temporary easements)
 - Soil Testing (drawings assume 2,000 p.s.f. soil pressure)
- D. Cleaning-Up
- E. Project Close Out
- F. Contingency

2. Site Work

- A. Clearing Site
 - Includes all tree & brush removal as well as existing structures to be removed.
- B. Earthwork
 - Includes all excavation, backfill & rough grading.
 - 3/4" Diameter Coarse Gravel Fill: 2 tons
- C. Lawns and Planting
 - Includes all finish grading, sod, grass seed and fertilizer, shrubs and trees.

3. Carpentry

- A. Rough Carpentry
 - Exterior Framing: All Treated Material
 - 2x6: 1/3, 4/7', 30/8', 9/10'
 - 2x8: 2/6' 4/8'
 - 2x4: 34/7'
 - 1x4: 10/10'
 - 2 Pc 4x8-1/4" Plywood Sheathing
 - 8 Pc 4x8- Plywood Siding
 - 8 Pc 4x8- Peg Board
 - Posts:
 - 4x4: 3/2', 6/4', 2/6', 2/7', 1/8', 2/9'
 - 4x6: N/A
 - 4x8: N/A
 - 6x6: 6/9', 1/4'
 - Roofing & Misc.
 - 192 Sq. Ft.
 - 10 Lin.Ft. Ridge Cap
 - 2 Ea. 48"x48" Sky Lites
 - 32 Lin.Ft. "U" Cannel
 - 2 Ea. 1'6"x 2'6" Windows
 - 1 Ea. 3/0x6/8 Door
 - 150 Sq.Ft. Poly Film Plastic